

PP15 Antibody
Purified Rabbit Polyclonal Antibody (Pab)
Catalog # AP53312

Specification

PP15 Antibody - Product Information

Application	WB
Primary Accession	P61970
Reactivity	Human, Mouse
Host	Rabbit
Clonality	Polyclonal
Calculated MW	14 KDa
Antigen Region	62-111

PP15 Antibody - Additional Information

Gene ID 10204

Other Names

Nuclear transport factor 2, NTF-2, Placental protein 15, PP15, NUTF2, NTF2

Dilution

WB~~ 1:1000

Format

Rabbit IgG in phosphate buffered saline , pH 7.4, 150mM NaCl, 0.09% (W/V) sodium azide and 50% glycerol

Storage

Store at -20 °C.Stable for 12 months from date of receipt

PP15 Antibody - Protein Information

Name NUTF2 ([HGNC:13722](#))

Function

Mediates the import of GDP-bound RAN from the cytoplasm into the nucleus which is essential for the function of RAN in cargo receptor-mediated nucleocytoplasmic transport. Thereby, plays indirectly a more general role in cargo receptor-mediated nucleocytoplasmic transport. Interacts with GDP-bound RAN in the cytosol, recruits it to the nuclear pore complex via its interaction with nucleoporins and promotes its nuclear import.

Cellular Location

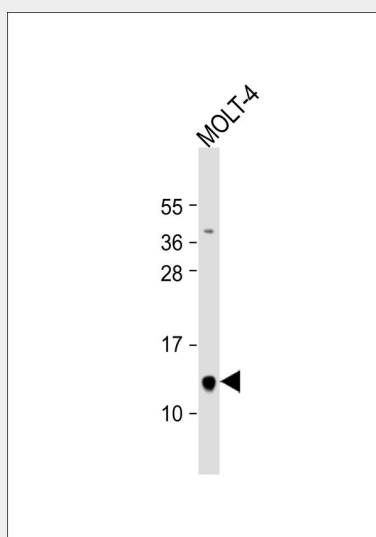
Cytoplasm, cytosol. Nucleus outer membrane {ECO:0000250|UniProtKB:P61972}. Nucleus, nuclear pore complex {ECO:0000250|UniProtKB:P61972}. Nucleus inner membrane {ECO:0000250|UniProtKB:P61972}. Nucleus, nucleoplasm. Note=At steady state it is essentially nucleoplasmic, enriched in nucleoplasmic foci

PP15 Antibody - Protocols

Provided below are standard protocols that you may find useful for product applications.

- [Western Blot](#)
- [Blocking Peptides](#)
- [Dot Blot](#)
- [Immunohistochemistry](#)
- [Immunofluorescence](#)
- [Immunoprecipitation](#)
- [Flow Cytometry](#)
- [Cell Culture](#)

PP15 Antibody - Images



Anti-PP15 Antibody at 1:1000 dilution + MOLT-4 whole cell lysate Lysates/proteins at 20 µg per lane. Secondary Goat Anti-Rabbit IgG, (H+L), Peroxidase conjugated at 1/10000 dilution. Predicted band size : 14 kDa Blocking/Dilution buffer: 5% NFDM/TBST.

PP15 Antibody - Background

Facilitates protein transport into the nucleus. Interacts with the nucleoporin p62 and with Ran. Acts at a relatively late stage of nuclear protein import, subsequent to the initial docking of nuclear import ligand at the nuclear envelope. Could be part of a multicomponent system of cytosolic factors that assemble at the pore complex during nuclear import.

PP15 Antibody - References

Grundmann U., et al. Nucleic Acids Res. 16:4721-4721(1988).
Paschal B.M., et al. J. Cell Biol. 129:925-937(1995).
Ebert L., et al. Submitted (JUN-2004) to the EMBL/GenBank/DDBJ databases.
Ota T., et al. Nat. Genet. 36:40-45(2004).
Mural R.J., et al. Submitted (JUL-2005) to the EMBL/GenBank/DDBJ databases.